

- **Description**

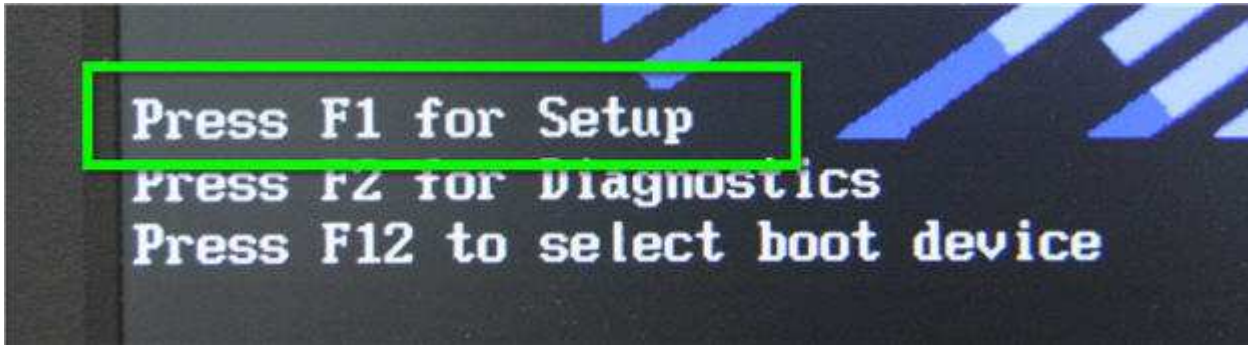
Serial console is disabled by default on NG6000 appliances, it needs to be activated if required.

- **Symptoms**

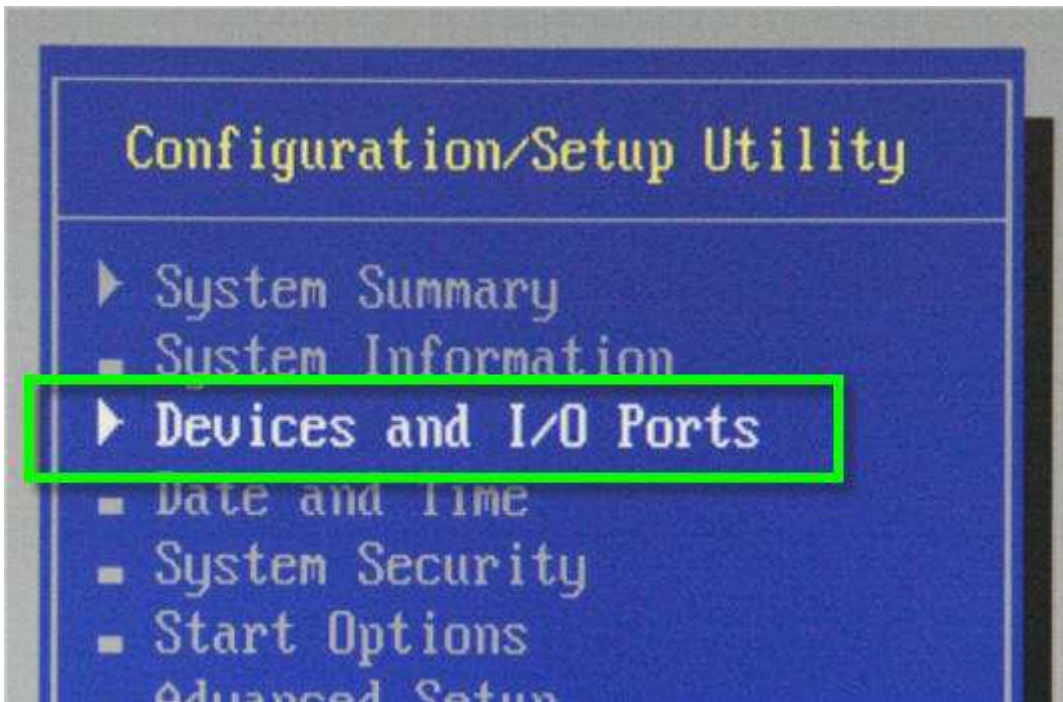
No access to serial console, even with correct terminal settings (19200-8-N-1).

- **Solution**

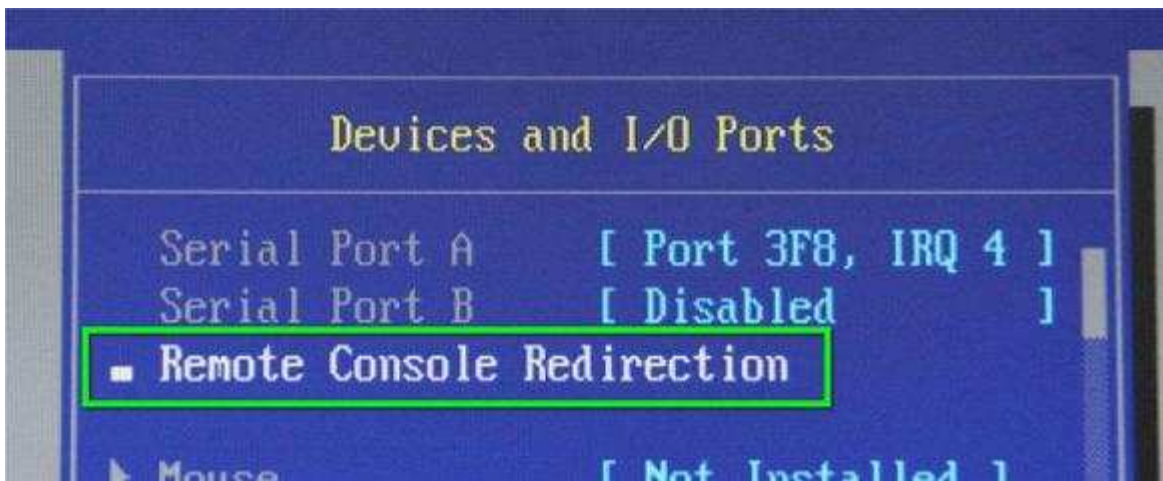
enter the BIOS:



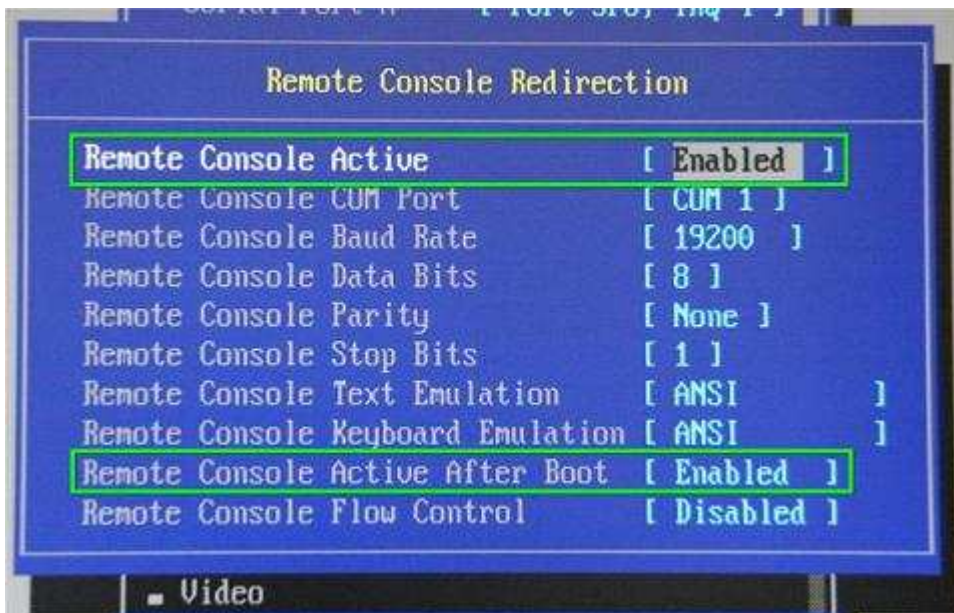
enter "Devices and I/O Ports":



enter "Remote Console Redirection":



change RCR Settings:



Save while exiting the BIOS.