

How to install and configure the new ISA IP forwarding plug-in



Installing the ISA Plug-In

⇒ **To install the plug-in:**

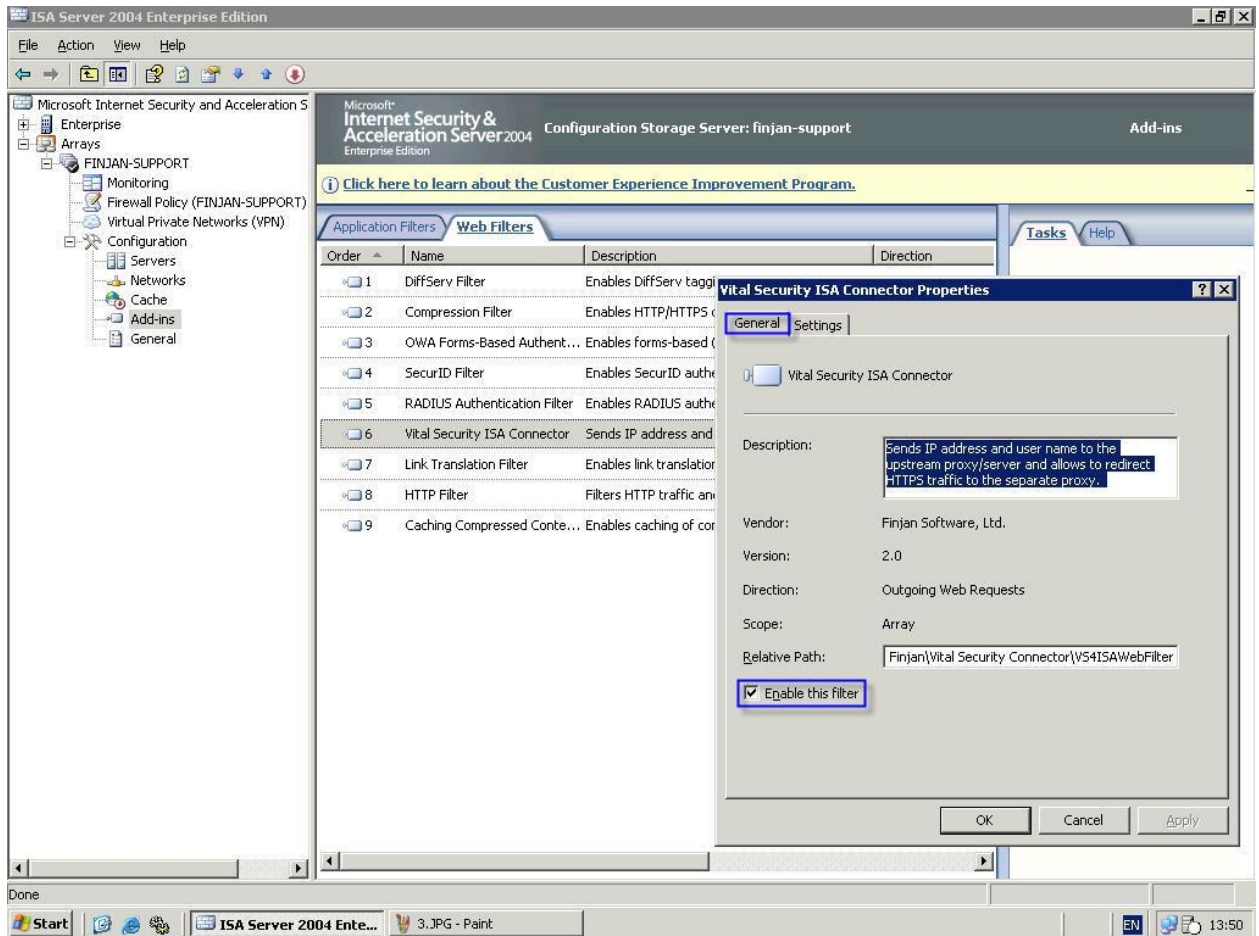
1. Close the ISA Server Management Console.
2. Uninstall the old ISA plug-in.
3. Make sure that the older version of the plug-in is uninstalled by checking the Add-ins section in the ISA server. If the plug-in is still installed, reboot your computer and repeat steps 1 and 2, otherwise continue to the next step.
4. Close the ISA Server Management Console again.
5. Run the new ISA plug-in installation file and follow the instructions contained within.

 **NOTE: Users of the previous version of the ISA plug-in should follow steps 1 to 5, other users should follow steps 4 and 5 only.**

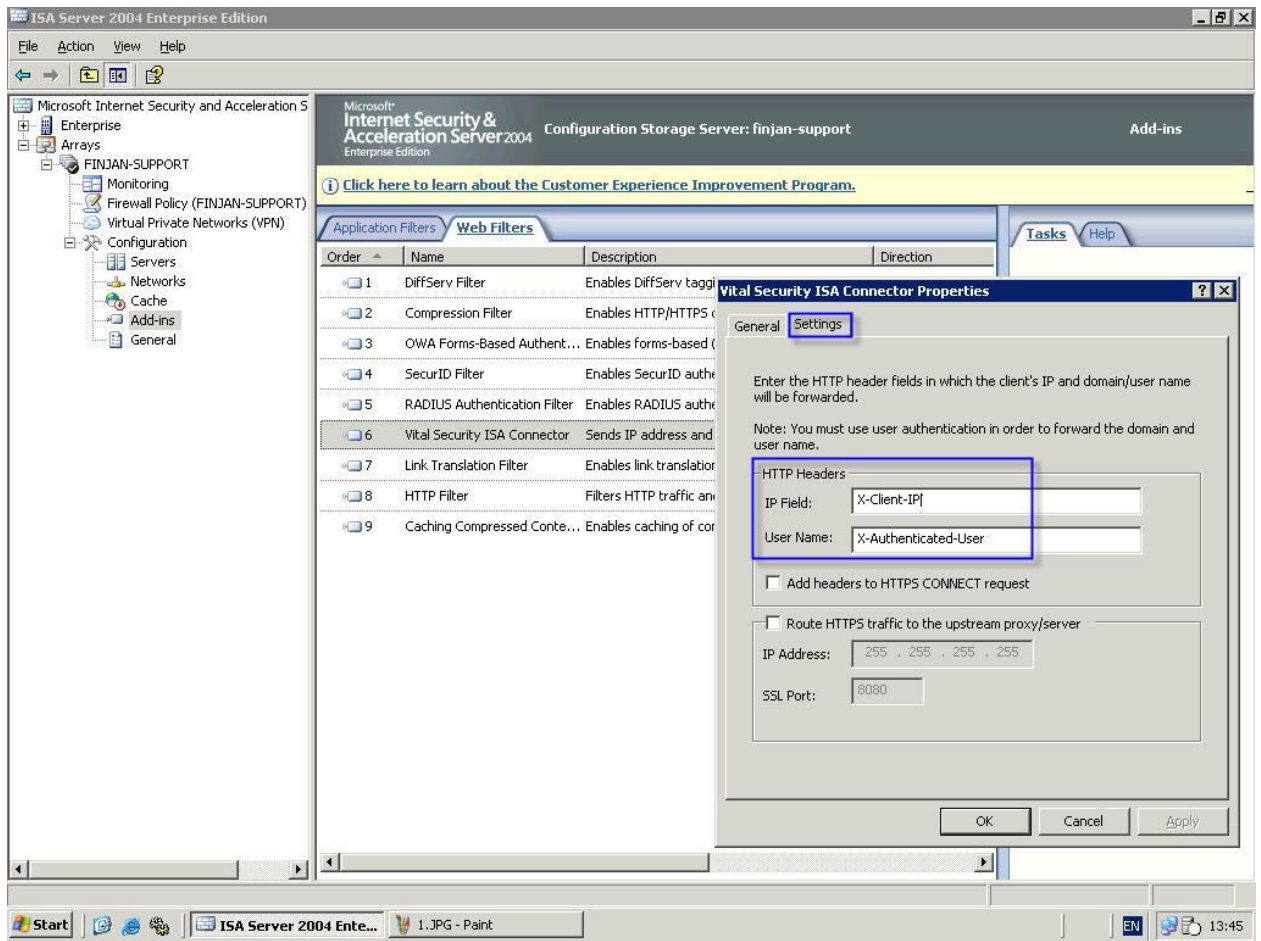
Configuring the ISA Plug-In

⇒ **To configure the Plug-in:**

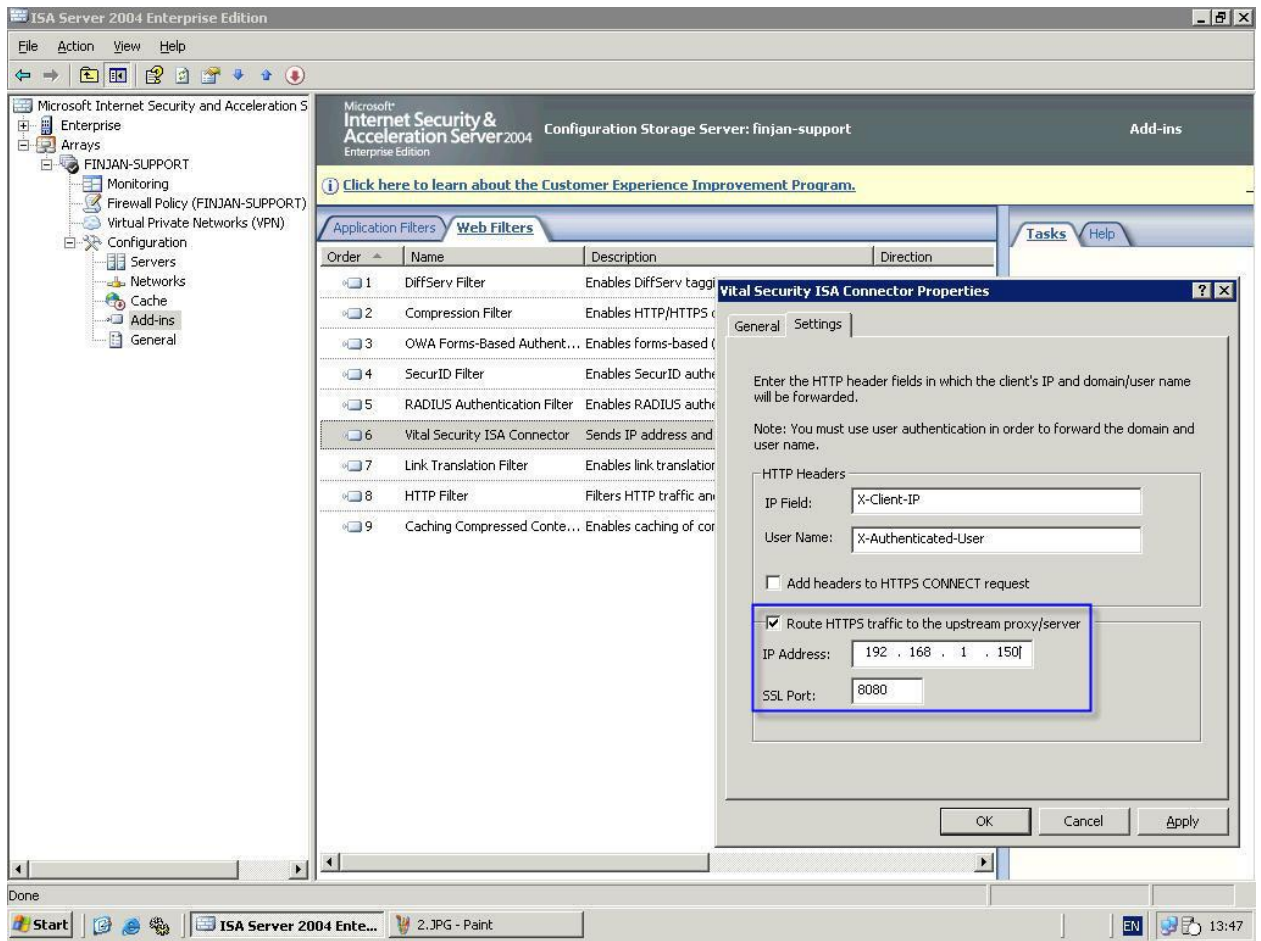
1. In the ISA Management Console, navigate to Add-ins and select Vital Security ISA Connector. Press **Configure**.



2. Ensure the plug-in is enabled by checking the Enable this filter option.
3. In the Settings tab, in the HTTP Headers section, enter a string in the IP Field. The default string is X-Client IP. This string will be used by Vital Security to read the source IP address.



4. Check the **Route HTTPS traffic to the upstream proxy/server** checkbox and fill in the IP address and SSL Port, in order to separate HTTP and SSL traffic.

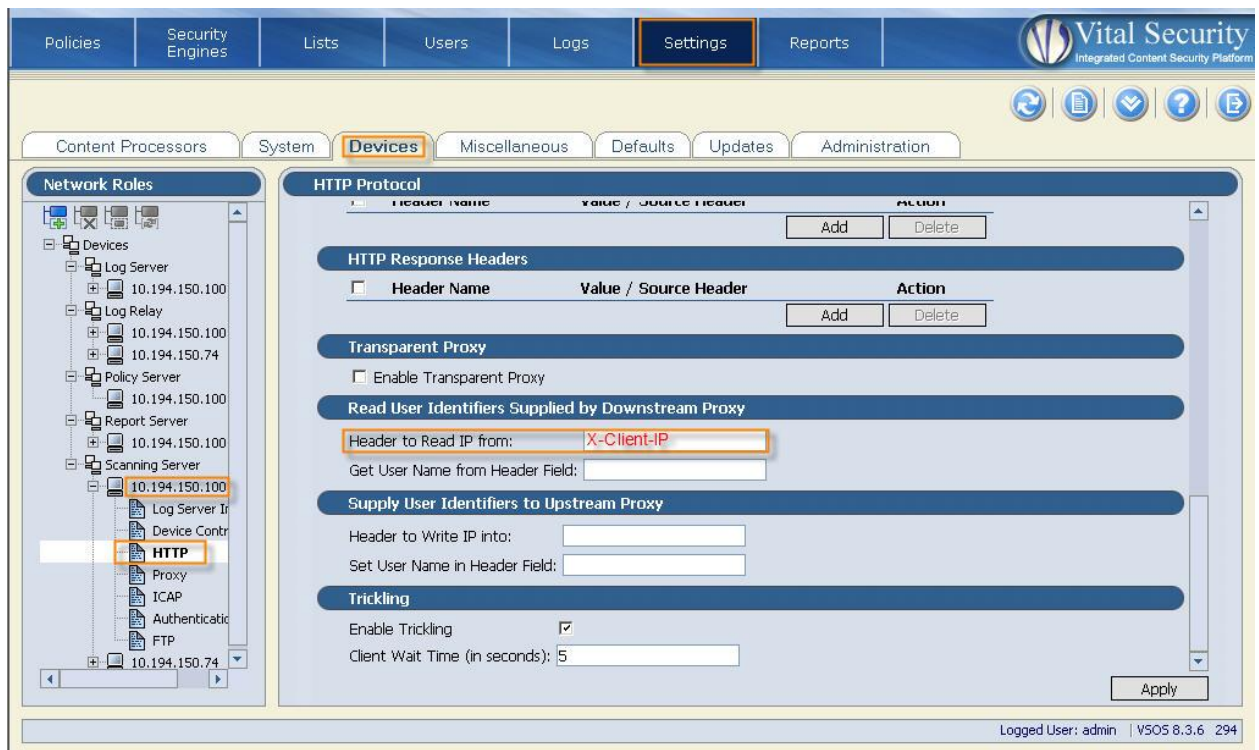


5. Click **Apply**.

Configuring the Vital Security Appliance

⇒ **To configure the Vital Security appliance:**

1. In the Management Console, navigate to Settings > Devices > Scanning Server > HTTP. In the Read User Identifiers Supplied by Downstream Proxy section, fill in the IP Header string in the Header to Read IP from. This should be the same header string you filled in in the ISA plug-in.
2. Click Apply and Commit Changes.



The screenshot shows the Vital Security Management Console interface. The 'Settings' tab is selected, and the 'Devices' sub-tab is active. In the left-hand 'Network Roles' tree, the 'Scanning Server' is expanded, and the 'HTTP' protocol is selected. The main panel displays the 'HTTP Protocol' configuration page. Under the 'Read User Identifiers Supplied by Downstream Proxy' section, the 'Header to Read IP from:' field is set to 'X-Client-IP'. The 'Apply' button is visible at the bottom right of the configuration area.

Logged User: admin | V505 8.3.6 294